

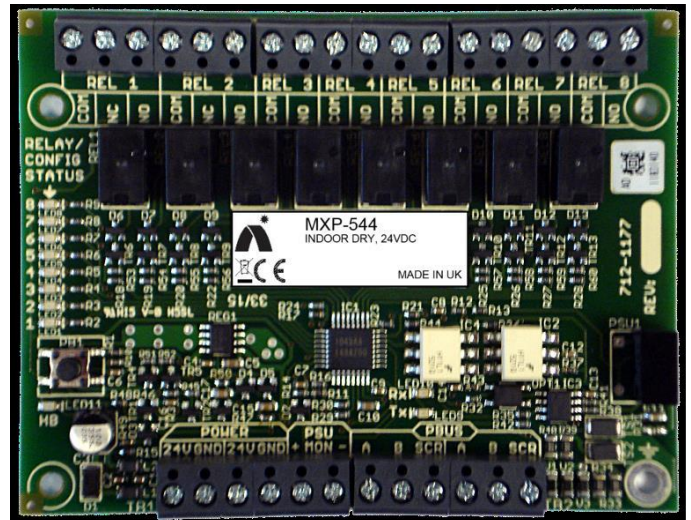
## Peripheral 8-Way Relay Card

The MXP-544 Peripheral 8-Way Relay Card is an internal module intended for use with the Mx-5000 range of fire alarm control panels.

Each card provides 8 configurable relay outputs (2 x FORM C, 6 x FORM A). Up to 16 cards may be connected to a panel, allowing for an extra 128 relay outputs (SELV).

The MXP-544 is configured using a positive action sequence involving the on-board push button and LED indicators. This allows the module to be safely configured/inspected while adding an extra reporting capability not previously available to peripheral modules.

Cards are protocol independent.



### Approvals

- EN54-18

### Features

- Powered from CIE on local PSU
- Provides 8 configurable relay outputs
- Up to 16 cards can be connected to the peripheral bus = 128 relays

### Specification

Power supply	24 VDC
Quiescent current	30 mA (Vs = 24 V)
Max current (O/Ps on)	80 mA (Vs = 24V, 8 Relays on)
Operating temperature	-5°C to 40°C
Relative humidity	95% non-condensing (maximum)
Dimensions H x W x D mm	15 x 105 x 80 mm
Weight	80 g
PSU monitor input	V F
PSU monitor EOL	10 K
PBus EOL	150 R 150 Ω
Relay outputs	SELV, 2 x Form C, 6 x Form A
Contact rating	1 A at 30 VDC (resistive load)
Contact Resistance	100 mΩ
Contact endurance	100,000 operations min (under rated load)

### Order Codes and Options

Mxp-544:	Peripheral 8-Way Relay Card
----------	-----------------------------

## Limitations

Cards must be mounted locally to their power supply.

Requires PC-NET-003 Configuration Tool Version 6.91 Onwards

[Check if this document is up to date](#) | [Give us feedback](#)

Advanced, The Bridges, Balliol Business Park, Newcastle, NE12 8EW, UK T: +44 (0)845 894 7000, E: [enquiries@advancedco.com](mailto:enquiries@advancedco.com), W: [www.advancedco.com](http://www.advancedco.com)

As our policy is one of constant product improvement the right is therefore reserved to modify product specifications without prior notice.