

50-, 100-, 200-Zone LED Cards

The Zone LED cards are a range of panel mounted peripheral modules that can be added to the MxPro 5 series of control panels. The display cards are available in numerous configurations and provide an individual indication of the zone(s) in Fire by default but are also fully programmable.

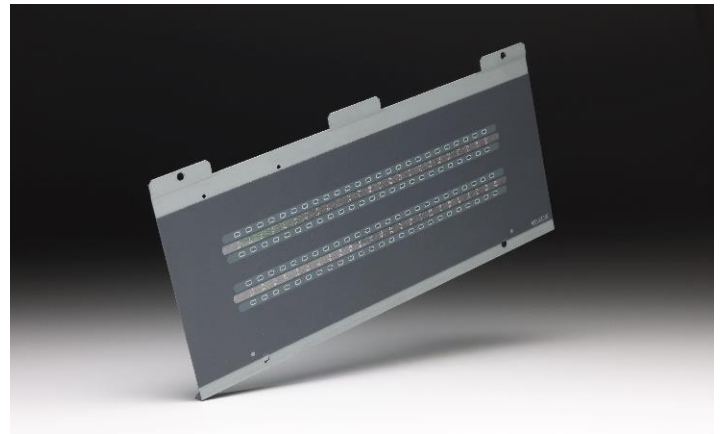
The units fully support dynamic zoning, on networked or larger stand-alone systems, and can be used to provide individual zonal LED indication at one location.

Applications

The zone/LED indicator card can be fitted to all MxPro 5 control panels to provide an indication of the zone(s) in fire in addition to the panel graphical display. The LED will illuminate when the corresponding zone enters a Fire condition.

This next generation in LED technology also allows the LED to be fully programmed. Each LED can now operate in accordance with the cause-and-effect strategy in which the LED can illuminate upon Fault, Isolation, Output Group plus many more.

LED cards can now be ordered with Red and Yellow LED arrangements or provided with bi-colour LEDs with slide-in labels to assist identifying the origin of the condition.



Features

- Programmable LEDs
- 3-year warranty as standard
- Factory fitted or retrofit
- Supports dynamic zoning
- Fully programmable
- Cost effective against ancillary hardware

Order Codes and Options

Mxp-513M-050RD:	Medium Enc. 50 Zone Fire (Red)
Mxp-513M-050RY:	Medium Enc. 25 Fire (Red) + 25 Fault (Yellow)
Mxp-513M-050YL:	Medium Enc. 50 Zone Fault (Yellow)
Mxp-513L-050RD:	Large Enc. 50 Zone Fire (Red)
Mxp-513L-050RY:	Large Enc. 25 Zone Fire (Red) + 25 Zone Fault (Yellow)
Mxp-513L-050YL:	Large Enc. 50 Zone Fault (Yellow)
Mxp-513L-100RD:	Large Enc. 100 Zone Fire (Red)
Mxp-513L-100RY:	Large Enc. 50 Zone Fire (Red) + 50 Zone Fault (Yellow)
Mxp-513L-100YL:	Large Enc. 100 Zone Fault (Yellow)
Mxp-513L-200RY:	Large Enc. 100 Zone Fire (Red) + 100 Zone Fault (Yellow)
Mxp-513L-050CRY:	Large Enc. 50 Zone Column Format (25 Red + 25 Yellow)
Mxp-513L-050CRYG:	Large Enc. 50 Zone Column Format (30 Red/Yellow + 20 Yellow/Green)
Mxp-513-050RD:	Extended Enc. 50 Zone Fire (Red)
Mxp-513-050RY:	Extended Enc. 25 Zone Fire (Red) + 25 Zone Fault (Yellow)
Mxp-513-050YL:	Extended Enc. 50 Zone Fault (Yellow)
Mxp-513-100RD:	Extended Enc. 100 Zone Fire (Red)

Mxp-513-100RY:	Extended Enc. 50 Zone Fire (Red) + 50 Zone Fault (Yellow)
Mxp-513-100YL:	Extended Enc. 100 Zone Fault (Yellow)
Mxp-513-200RY:	Extended Enc. 100 Zone Fire (Red) + 100 Zone Fault (Yellow)
Mxp-513-050CRY:	Extended Enc. 50 Zone column format (25 Red + 25 Yellow)
Mxp-513-050CRYG:	Extended Enc. 50 Zone column format (30 Red/Yellow - 20 Yellow /Green)

[Check if this document is up to date](#) | [Give us feedback](#)

Advanced, The Bridges, Balliol Business Park, Newcastle upon Tyne, NE12 8EW, UK T: +44 (0)345 894 7000, E: enquiries@advancedco.com,
W: www.advancedco.com

As our policy is one of constant product improvement the right is therefore reserved to modify product specifications without prior notice.