

## Network Diagnostic Analysis, Performance and Commissioning Report Generation

IVIEW is used to provide its users with the ability to rapidly recognise and diagnose physical errors on the network and is used in conjunction with the Advanced MXP-635-A fibre converter to provide a single consolidated solution.

IVIEW supports the option of real time monitoring of the network physical layer. This feature requires MXP-635-A fibre converters to be installed at each network node for signal redundancy. It can also be used for remote monitoring or reviewing recovered data files offline.

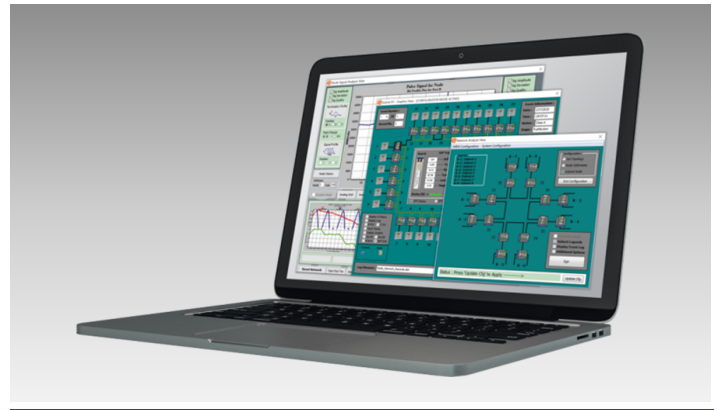
The tool and its diagnostics capability provide the user with the ability to record events, before, during and after each system maintenance exercise. These events can be presented in a report to provide an indication of the state and stability of the network by including detailed information captured either in a time period preceding the fault recovery or user-initiated reset.

The data files recovered from the MXP-635-A fibre converters are loaded into IVIEW and decoded, with the diagnostic detail presented to the user in one of three views:

- Top Level network View
- Node Analysis view
- Event Record view with Report generation

The IVIEW application also includes a graphical view, providing an easy interpretation through topographical network views.

IVIEW can connect to any of the MXP-635-A modules via USB (v2.0) or RS-485, and is allocated to a dedicated communication port on a monitoring station (the device hosting the IVIEW application).



### Features

IVIEW, when used in conjunction with the MXP-635-A, offers the user enhanced diagnostic functionality as follows:

- Efficient cable fault detection and diagnosis
- System stability monitoring
- Identification of failing components
- Support in commissioning (Firmware Version management, Wiring polarity verification, Network configuration monitoring e.g. double address indication, Signal attenuation monitoring – repeater requirements, System stability confirmation)
- Support in maintenance monitoring (Log of all physical network alterations)
- CIE watchdog/power recycle monitoring
- Early indication of intermittent fault on network cards
- Preventative maintenance opportunity through monitoring the system stability over multiple maintenance exercises.
- The IVIEW Software Application can support multiple instances and hence multiple rings for monitoring

## IVIEW Versions

- **MXP-635/COMM**

The IVIEW commissioning and maintenance tool for fibre optic networks includes the following features:

- An annual licence locked to an engineering laptop for use on multiple networks
- Full Optic Fibre infrastructure analysis and system qualification
- The MXP-635-A network nodes are displayed with fault mapping, showing the location of network faults and recovery.
- Status of nodes and diagnostic support
- Digital Optical Monitoring (DOM) of all optic fibre transceivers
- Displays network data traffic before a recovery event
- Dynamic node monitoring
- Full report generation for both node and network events on MXP-635-A modules, including graphs for each recovery event

- **MXP-635/IVIEW**

IVIEW annual licence with the same features as above, limited to 10 nodes.

## IVIEW Minimum Requirements

Operating System:	Windows 7 (64 bit), Windows 10 (64bit)
Hardware: Processor:	Intel Core2, 3GHz
Memory:	2048Mbytes (2GB)
Hard disk:	160GB

## Order Codes and Options

<b>MXP-635-A</b>	Fibre Optic Convertor – Active
<b>MXP-635-P</b>	Fibre Optic Convertor – Passive
<b>MXP-635-SM</b>	Fibre Optic SFP Module – Single-mode
<b>MXP-635-MM</b>	Fibre Optic SFP Module – Multi-mode
<b>MXP-635-BD/AB</b>	Fibre Optic SFP Module – Bi-Directional (UP)
<b>MXP-635-BD/BA</b>	Fibre Optic SFP Module – Bi-Directional (Down)
<b>MXP-635/IVIEW</b>	Fibre Optic iView Commissioning Tool (Limited)
<b>MXP-635/COMM</b>	Fibre Optic iView Commissioning Tool (Interactive)

[Check if this document is up to date](#) | [Give us feedback](#)

Advanced, The Bridges, Balliol Business Park, Newcastle upon Tyne, NE12 8EW, UK T: +44 (0)345 894 7000, E: [enquiries@advancedco.com](mailto:enquiries@advancedco.com),  
W: [www.advancedco.com](http://www.advancedco.com)

As our policy is one of constant product improvement the right is therefore reserved to modify product specifications without prior notice.