

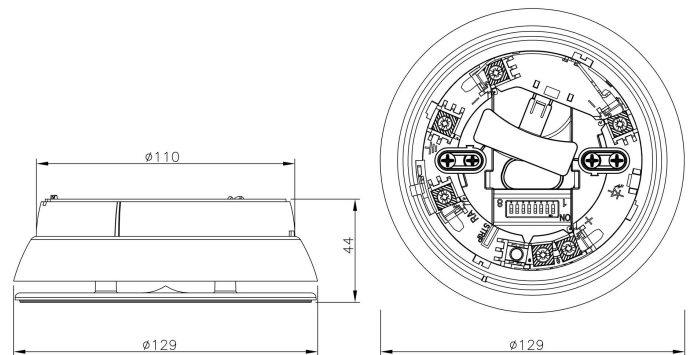
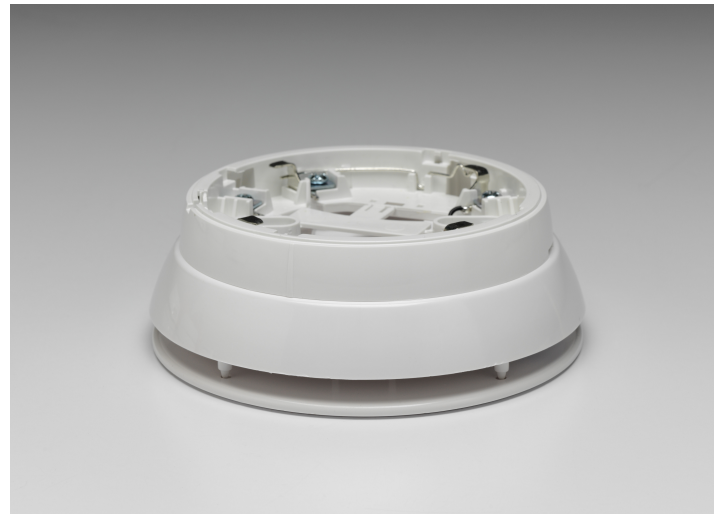
## Slave Sounder Base

The slave sounder base plus is a low profile base sounder which activates its acoustic output following the triggering of an alarm condition on the host detector. The acoustic output is selected through the dip-switch.

The sounder base is designed around a fully digital protocol and has a 240 device loop capacity. When used in conjunction with an associated intelligent detector the unit can be controlled via the cause and effect programming of an Axis EN compatible control panel.

The unit has integral DIP switches, allowing independent adjustment of both tone and volume settings. The unit's integral detector base has easy access for loop cabling and allows for the connection of both the sounder and associated detectors via a single set of cable terminations.

This sounder base is compatible with Axis-OP, Axis-OH, Axis-HT, Axis-OPX, Axis-OHX and Axis-HTX devices.



### Features

- 32 programmable tones
- tone and volume set via DIP switch
- Synchronised sounder
- Adjustable volume output
- Includes device identification tab
- Easy central cable entry
- Low profile design
- Ceiling mounting bracket includes sound diffuser cone, loop cables passage, pre-cut holes for screwing the bracket to the ceiling and fixing pins

### Standards and Approvals

- EN54-3:2001 +A1:2002 +A2:2006
- Approved by IMQ and certified by the UAE Civil Defence

### Specification

|   |                                    |
|---|------------------------------------|
| Voltage range   | From 16 to 40 Vdc (typical 24 Vdc) |
| Max current load @ 40 Vdc applied, high volume selected | 2.5 mA                             |
| Max current load @ 24 Vdc applied, high volume selected | 3.5 mA                             |
| Max current load @ 16 Vdc applied, high volume selected | 4 mA                               |
| Acoustic output frequency range                         | From 440 to 2900 Hz                |
| Maximum acoustic intensity                              | 92.6 dB(A)                         |
| Ambient temperature range                               | From -10°C to +55°C                |
| Maximum tolerated humidity                              | 95% RH (without condensation)      |

|        |       |
|--------|-------|
| IP     | 21C   |
| Weight | 200 g |

## Order Codes and Options

|            |   |
|------------|---|
| Axis-S2AMB | Slave Sounder Base                                    |
| Axis-OP    | Intelligent Optical Smoke Detector (without isolator) |
| Axis-OH    | Intelligent Multicriteria Detector (without isolator) |
| Axis-HT    | Intelligent Heat Detector (without isolator)          |
| Axis-OPX   | Intelligent Optical Smoke Detector                    |
| Axis-OHX   | Intelligent Multicriteria Detector                    |
| Axis-HTX   | Intelligent Heat Detector                             |

[Check if this document is up to date](#) | [Give us feedback](#)

Advanced, The Bridges, Balliol Business Park, Newcastle upon Tyne, NE12 8EW, UK T: +44 (0)345 894 7000, E: [enquiries@advancedco.com](mailto:enquiries@advancedco.com),  
W: [www.advancedco.com](http://www.advancedco.com)

As our policy is one of constant product improvement the right is therefore reserved to modify product specifications without prior notice.