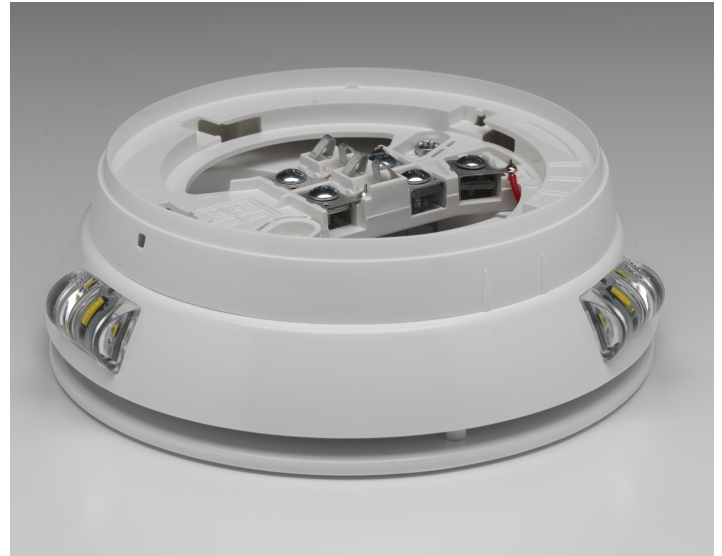


Conventional Base Sounder with White or Red VAD

The Conventional Base Sounder is compatible with Axis EN control panels and requires a suitable host detector.

Following the triggering of an alarm condition on the host detector, the base sounder activates the acoustic output that has been selected.

The sounder also emits either a white or red visual signal.



Features

- Sound diffuser cone
- Pre-cut holes for screwing the bracket to the ceiling
- Fixing pins
- Adapter base for the host detector
- Selector for the acoustic tone and volume
- Loop cables passage
- VAD output

Specification

Voltage range	From 16 to 40 Vdc (typical 24 Vdc)
Max load current 24 Vdc applied, high volume selected	21 mA
Ambient temperature range	-10°C to +55°C
Acoustic output frequency range (all tones)	From 440 to 2900 Hz
Maximum acoustic intensity - tone 1, 2, 3 and 4 only	92.6 dB(A)
Maximum tolerated humidity	95% RH (without condensation)
VAD's signal frequency	0.5 Hz
VAD typical flash coverage set to high power	C 3 - 14.2 and O 4.6 - 14.2
VAD typical flash coverage set to low power	C 3 - 9.2
VAD's signal colour	white
IP rating	21C
Weight	210 g

Order Codes and Options

20-VC-BSB-23W-01:	Conventional Base Sounder with White VAD
20-VC-BSB-23R-01:	Conventional Base Sounder with Red VAD

[Check if this document is up to date](#) | [Give us feedback](#)

Advanced, The Bridges, Balliol Business Park, Newcastle upon Tyne, NE12 8EW, UK **T:** +44 (0)345 894 7000, **E:** enquiries@advancedco.com,
W: www.advancedco.com

As our policy is one of constant product improvement the right is therefore reserved to modify product specifications without prior notice.