

Intelligent Mini Switch Monitor Module

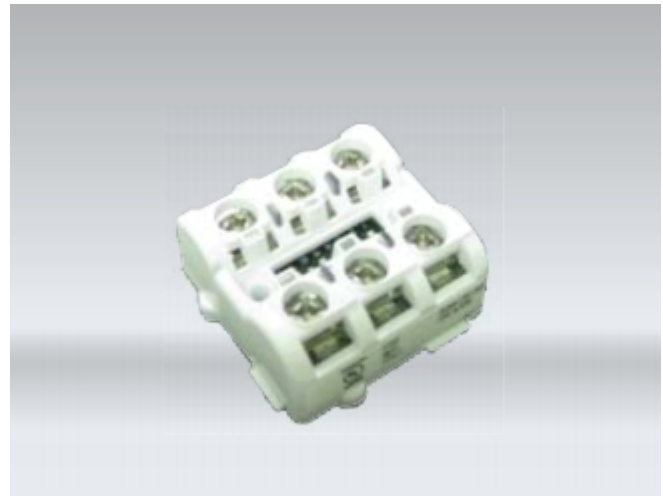
Designed to be a miniature interface for Axis AX Series SLC circuits, the Intelligent Mini Switch Monitor Module from Advanced offers unique fire alarm industry features that simplify installations and provide superior flexibility.

Each Intelligent Mini Switch Monitor Module provides an addressable interface for a single contact device or group of contact devices connected via an initiating device circuit (IDC). With the flexibility of the Advanced Axis AX Series Intelligent Fire Alarm Control Panel's contact devices can be normally open (N.O.) or normally closed (N.C.) dry contacts. Contact devices range from heat detectors, linear heat detectors, 4-wire conventional smoke detectors, water flow switches, tamper switches, manual pull stations, switch control inputs, etc. The Intelligent Mini Switch Monitor Module can monitor any number of contact devices; however, it is recommended not to mix alarm, supervisory, or security contacts on the same monitoring module circuit.

In addition to the standard contact monitoring for alarm type status, each Intelligent Mini Switch Monitor Module has the capability to monitor a normally open contact with a Listed 10K resistor in series with the contact. When this contact is activated, the Axis AX Series Intelligent Fire Alarm Control Panel will interpret this status change as a pre-alarm event rather than an alarm event. Through the Axis AX Series Intelligent Fire Alarm Control Panel, PCNeT programming, separate control/operations can be performed based on this pre-alarm event.

The Intelligent Mini Switch Monitor Module's initiating device circuit (IDC) is wired Class B to the monitored contact device(s). Each Intelligent Mini Switch Monitor Module incorporates three LEDs for device status; a green LED which flashes on device poll, a yellow LED which flashes when the initiating device circuit is in trouble, and a red LED which illuminates steady during an alarm condition. In addition to the onboard LEDs, the Intelligent Mini Switch Monitor Module offers a remote LED output which flashes during device polling and illuminates steady during an alarm condition.

The Intelligent Mini Switch Monitor Module incorporates an integral eight position programming DIP switch for device addressing and priority interrupt programming. DIP switch eight is utilized for programming the priority interrupt feature. The priority interrupt feature provides a less than 2 second response time for alarm reporting to the Axis AX Series Intelligent Fire Alarm Control Panel(s). When the priority interrupt device is in an active state, the monitor's priority interrupt bypasses the normal Axis AX Series SLC communications process, and immediately allows the device to communicate with the Axis AX Series Intelligent Fire Alarm Control Panel(s). The priority interrupt feature is usually utilized for monitoring of highly critical contact devices such as manual pull stations.



Features

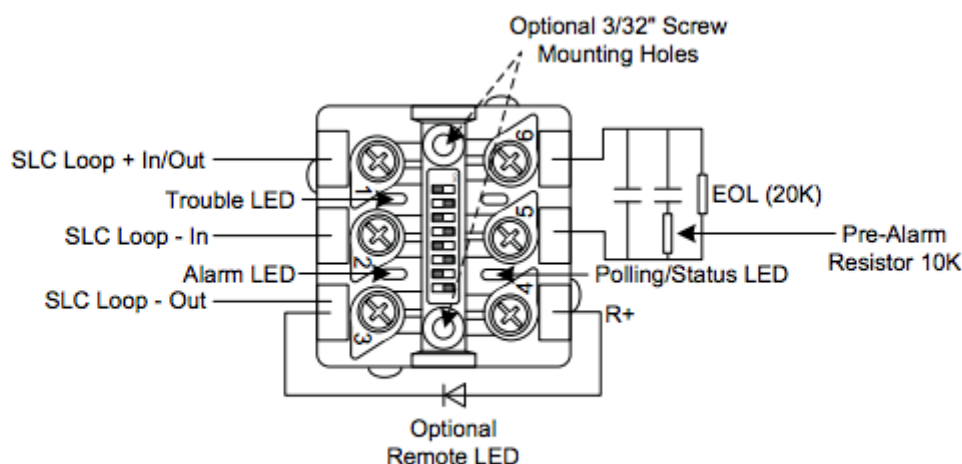
- Miniature Device Interface
- Class B Wiring
- PC-NeT Flexible Device Type Programming
- Programmable Priority Interrupt
- Optional Remote LED Output
- Durable Construction
- Adaptable for Pre-Alarm Signaling
- Integral Status LEDs
 - Green Flashes during Device Polling
 - Yellow Flashes during Trouble
 - Red Illuminates Steady during Alarm
- Electrical Box or DIN Rail Mounting
- Optional Remote Device Polling/Alarm LED

Listings and Approvals

- ETL ANSI/UL 864 Listed: 101564744NYM-001
- UL file: UOXX.S7003
- CSFM Approved: 7300-1713:0115

Engineered to fit into limited space enclosures, the Intelligent Mini Switch Monitor Module can either be installed inside the device being monitored, or it can be placed in an electrical box in the vicinity of the device being monitored. In addition, the Intelligent Mini Switch Monitor Module can be snapped into a standard electrical 1 3/8" DIN rail track for multiple Intelligent Mini Switch Monitor Module mounting.

Wiring Diagram



Specification

| | |
|-------------------------------------|---|
| Voltage | 17-28 VDC 5-9 VDC (Communication Pulses) |
| Operating Current | |
| Quiescent | 0.2 mA |
| Alarm | 3.6 mA |
| With Remote LED | 6.4 mA |
| End-of-Line Resistor | 20 K Ω , 0.5 Watt |
| Pre-Alarm Resistor | 10 K Ω , 0.5 Watt |
| Wiring | Screw In-Out Terminals |
| Mounting | Electrical Box or 1 3 / 8 " DIN Rail |
| Dimensions (Length, Width & Height) | 1 11/16" L x 1 11/16" W x 13/16"H |
| Weight | 1.1 oz |
| Operating Temperature | 32 ° -120 ° F (0 ° -49 ° C) |
| Humidity | 10-93% (Non-Condensing) |

Order Codes and Options

| | |
|--------------|--|
| 55000-765AEL | Intelligent Mini Switch Monitor Module |
| 28181-104 | Listed End of Line Resistor (20K) |
| 28181-097 | Listed Pre-Alarm Resistor (10K) |

[Check if this document is up to date](#) | [Give us feedback](#)

Advanced, The Bridges, Balliol Business Park, Newcastle upon Tyne, NE12 8EW, UK T: +44 (0)345 894 7000, E: enquiries@advancedco.com,
W: www.advancedco.com

As our policy is one of constant product improvement the right is therefore reserved to modify product specifications without prior notice.