

## Firefighter Phone System2 Emergency Phones

The Advanced Addressable Firefighter Emergency Phones are state-of-the-art, modern, reliable firefighter phones for use with Advanced's Firefighter Phone System2, providing two-way communications for firefighters and other emergency personnel.

Whether the Firefighter Phone System2 is integrated within an Axis AX fire alarm system, part of a dedicated firefighter phone node or a standalone firefighter phone system, the addressable firefighter emergency phones work seamlessly in any installation.

Advanced addressable firefighter emergency phones include an integral addressable interface module for connection to an Advanced SLC addressable circuit and Firefighter Phone System2 Telephone Riser. The addressable interface module is capable of supporting a total of four (4) Conventional Phone Jacks. Conventional Phone Jacks report all status and events to the Firefighter Phone System2 command centre, via the interconnected addressable firefighter emergency phone.

The addressable firefighter emergency phones contain a backbox, handset/chassis assembly and a door, with either a keylock, magnetic latch or break glass access. Each handset/chassis assembly is designed with rugged plastic and includes an electronically controlled off-hook activation signal. In addition, handset/chassis assembly phones are available with a standard coiled cord or armoured cable.

When an addressable firefighter phone handset is removed from its cradle, a dial tone will be heard at the handset, when the call-in signal is recognized at the firefighter command center, the dial tone will change to a ring tone. These dial and ring tones, at the handset, allow the user to know the call is being generated and received at the Firefighter Phone System2 command center, awaiting command center operator connection. In addition, at the Firefighter Phone System2 command center, the master addressable firefighter phone activation will generate a buzzer and visual indication of the specific addressable firefighter emergency phone calling in.

Once the call is connected by the command center operator, the ring tone will cease and two-way communications will be initiated. At any time during communications, the command center operator can place the connected call on hold, which in turn will activate a busy/hold tone at the addressable firefighter emergency phone handset.

Conventional Phone Jacks operate the same as the addressable firefighter emergency phones. However, all status indication and control with the Firefighter Phone System2 command center is done via the associated addressable firefighter emergency phone.



### Features

- Advanced SLC addressable protocol compatible
- Integral dial, ring and busy/hold tones
- Keylock, magnetic or break-glass access
- Electronic controlled off-hook activation
- Master phone supports four (4) conventional phone jacks
- Heavy duty construction
- Modular assembly
- Durable red finish
- Integral 'phone connect' LED
- Coiled or armoured cord cabling

### Listings and Approvals

- Certified to UL864 10<sup>th</sup> Edition – File No. S35979
- NYCFD COA: Pending
- CFSM approved: Pending

## Master Warden Telephones



**AV-TEL2-WD**  
Master Addressable  
Firefighter Telephone  
w/Breakglass & Keylock

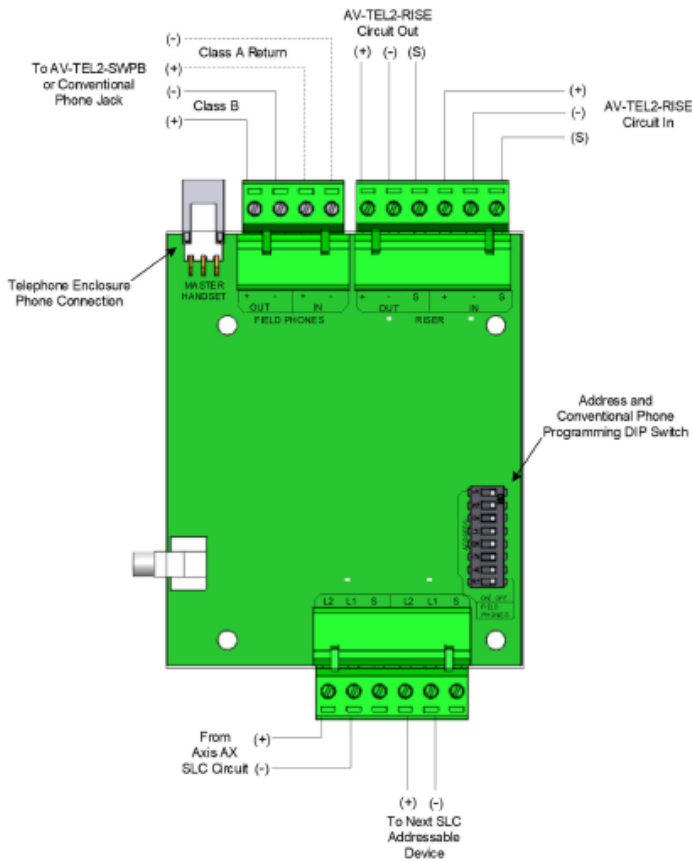


**AV-TEL2-WD2**  
Master Addressable  
Firefighter Telephone  
w/Keylock

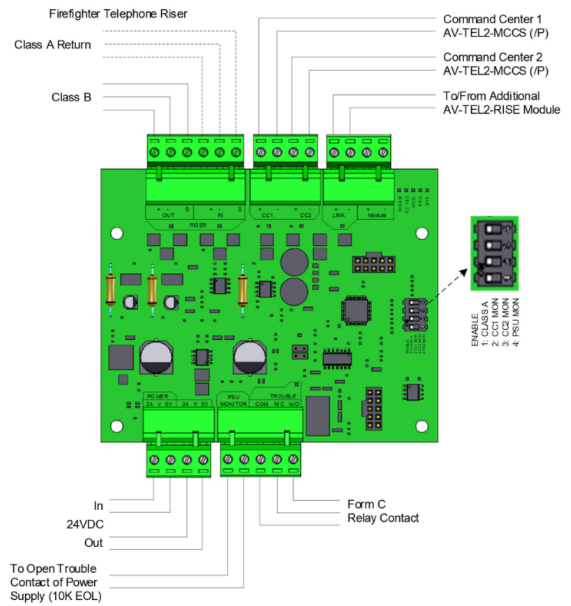


**AV-TEL2-WD3**  
Master Addressable  
Firefighter Telephone  
w/Magnetic Latch

## Addressable Phone Interface Modules



AV-TEL2-MWPB Wiring



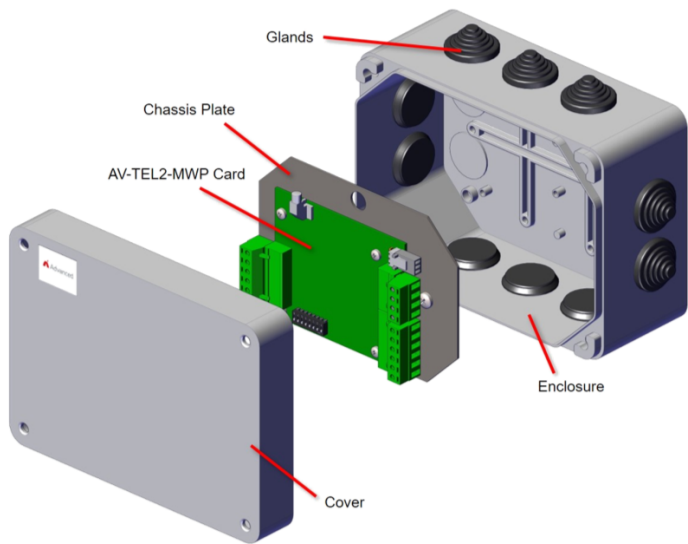
AV-TEL2-RISE Wiring

## Addressable Phone Interface Module Specifications

Voltage	17-28 Vdc
Operating current - non active phone	900 uA
Operating current - off-hook w/tone	4.7 mA
Operating current - off-hook connected	7.4 mA
Temperature	32-120°V (0-48°C)
Humidity	10-95% (non-condensing)
Analogue values - normal	18
Analogue values - off-hook/active	55
Analogue values - phone fault/open field ckt	6
Analogue values - riser supply fault	5 (up to 10V)
Analogue values - riser supply short circuit	4
Analogue values - corrupt communications	4
Analogue values - comm fault/device missing	0
Address range	1-126 (DIP switch prog.)
Environment	Indoor, dry
Field phones	Max. 4 (conventional phone jack)
Terminal wire size	12-22 AWG (Power Limited)

## Order Codes and Options

AV-TEL2-WD	Addressable firefighter telephone with break glass & keylock door, standard cord telephone
AV-TEL2-WDV	Addressable firefighter telephone with break glass & keylock door, armoured cord telephone
AV-TEL2-WD2	Addressable firefighter telephone with keylock door, standard cord telephone
AV-TEL2-WD2V	Addressable firefighter telephone with keylock door, armoured cord telephone
AV-TEL2-WD3	Addressable firefighter telephone with magnetic latch, standard cord telephone
AV-TEL2-WD3V	Addressable firefighter telephone with magnetic latch, armoured cord telephone
AV-TEL2-MWPB	Master addressable firefighter phone interface module with ring & hold tones. Supports up to 4 Conventional Phone Jacks
AV-TEL2-MWP-BX	Plastic enclosure & chassis plate mounted with Riser Audio Gateway card. Supports up to 15 Conventional Phone Jacks



AV-TEL2-MWP-BX

[Check if this document is up to date](#) | [Give us feedback](#)

Advanced, The Bridges, Balliol Business Park, Newcastle upon Tyne, NE12 8EW, UK T: +44 (0)345 894 7000, E: [enquiries@advancedco.com](mailto:enquiries@advancedco.com),  
W: [www.advancedco.com](http://www.advancedco.com)

As our policy is one of constant product improvement the right is therefore reserved to modify product specifications without prior notice.