

Sounder Splitter Card

The Sounder Circuit Splitter is a peripheral unit for use with all Axis EN control panels.

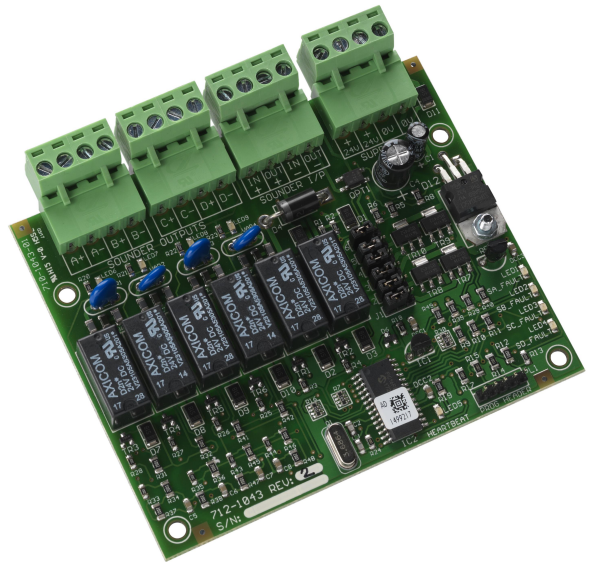
This additional unit takes a standard sounder circuit from either a control panel or other panel-based sounder circuit controller and multiplies to provide up to 4 monitored outputs.

In operation, the additional outputs follow the output they are connected to. The circuits are fully monitored for open and short circuit and will take an independent supply to provide up to 1A per circuit.

Applications / Limitations

The 4-way sounder splitter card can be supplied as a PCB only for mounting. When supplied fitted in this format, the load at the outputs from the splitter will be limited to the sounder output loading of the input circuit from which it is driven.

All 4 outputs on the sounder splitter card will operate in tandem, and follow the output of the sounder circuit to which the card is connected.



Features

- 4 monitored outputs
- Up to 1 Amp per circuit
- Cost effective against ancillary hardware
- 3 year warranty as standard

Specification

| | |
|--------------------------------|--|
| Sounder Input | “IN+” and “IN-” - connect to the input trigger (panel sounder output circuit) “OUT+” and “OUT-” - connect to the remainder of the input sounder circuit or terminate with a 10KΩ EOL resistor. |
| On Board Indication | 4 “red” sounder LED’s - LED’s illuminate when the output is triggered 4 “yellow” Fault LED’s - LED’s illuminate if the corresponding sounder circuit has a short or open circuit |
| 1A Splitter Sounder Outputs | 4 monitored sounder circuits (Total maximum load across all circuits = 1A) |
| Power Supply (Sounder Outputs) | Sounder output supply provided by the input (trigger) sounder circuit |
| Power Supply (Card) | Quiescent: 25mA Driving: 50mA |
| 4A Splitter Sounder Outputs | 4 x 1A rated monitored sounder circuits |
| Power Supply (Sounder Outputs) | Sounder output supply provided by an external 24Vdc 4A supply |
| Power Supply (Card) | Quiescent: 30mA Driving: 55mA |

Order Codes and Options

| | |
|----------|-----------------------------|
| Mxs-021: | 4 Way Sounder Splitter Card |
|----------|-----------------------------|

Compatibility

The Sounder Splitter Card is compatible with all Axis EN control panels.

[Check if this document is up to date](#) | [Give us feedback](#)

Advanced, The Bridges, Balliol Business Park, Newcastle, NE12 8EW, UK T: +44 (0)845 894 7000, E: enquiries@advancedco.com, W: www.advancedco.com

As our policy is one of constant product improvement the right is therefore reserved to modify product specifications without prior notice.